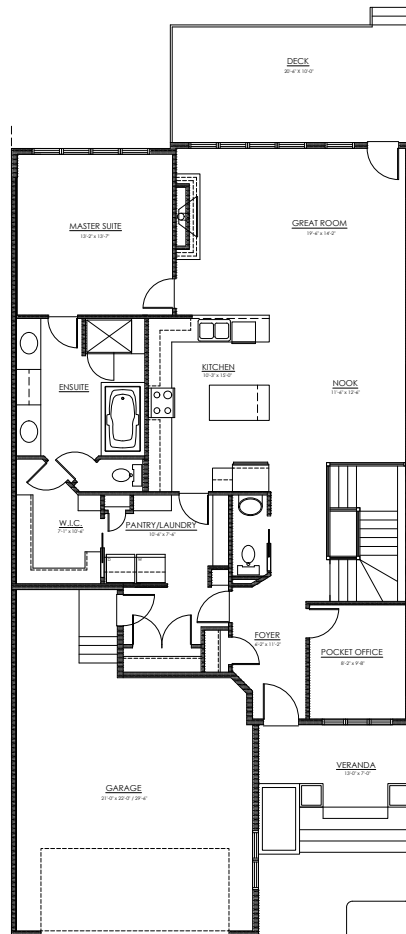


105 RYBURY COURT

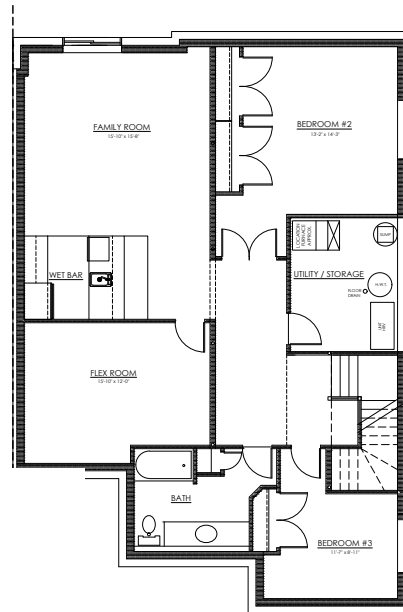
2787 SQFT - 3 BEDROOMS

\$809,900

The Estates of Salisbury Village is a quiet cul-de-sac of estate bungalow duplexes in Sherwood Park. Our award winning Preston floorplan is built on a pie-shaped lot directly backing greenspace. The open concept main floor includes a spacious Owner's Suite connecting to the Laundry Room through your Walk-in Closet. This move-in ready home is expertly designed with luxurious finishes including wallpaper accents and drapery in your Office and Master Bedroom.



MAIN FLOOR
1530 sqft



DEVELOPED BASEMENT
1257 sqft



30 YEARS OF EXCELLENCE

WWW.BUILDWITHKIMBERLEY.CA
Edmonton's SEVEN TIME Builder of the Year

Questions? Call or text us!
780.809.5025