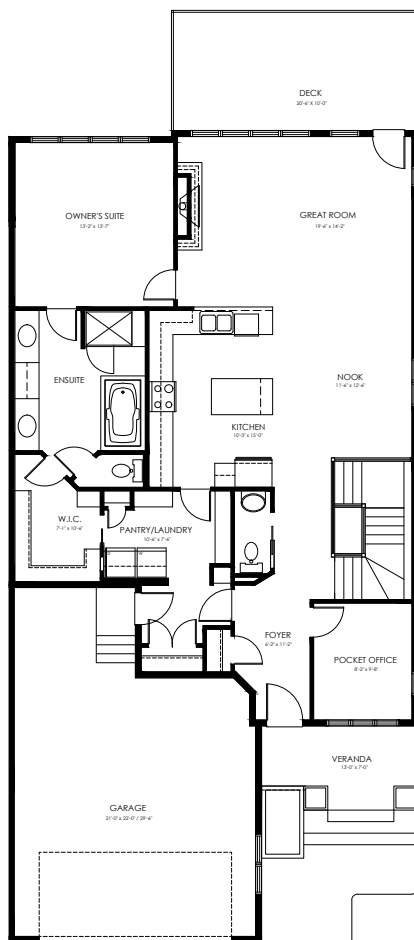


# 100 RYBURY COURT

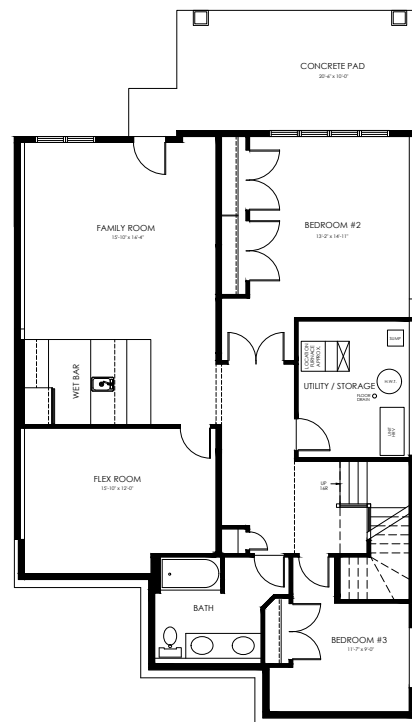
2789 SQFT - 3 BEDROOMS

\$749,900

The Estates of Salisbury Village is a quiet cul-de-sac of estate bungalow duplexes in Sherwood Park. Our award-winning Preston floorplan includes a spacious Owner's Suite connecting to the Laundry Room through your Walk-in Closet to allow for functional main floor living. No need to sacrifice on space with a Pocket Office on the main floor and an additional Flex Room plus 2 Bedrooms in the finished Walk-out Basement.



MAIN FLOOR  
1518 sqft



DEVELOPED BASEMENT  
1271 sqft