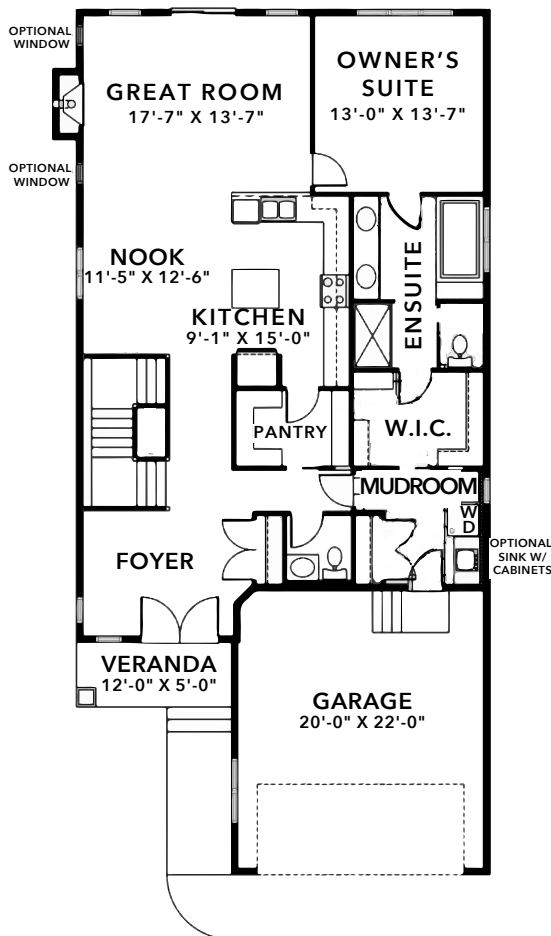


PRESTON 32

1491 SQFT – 1 BEDROOM

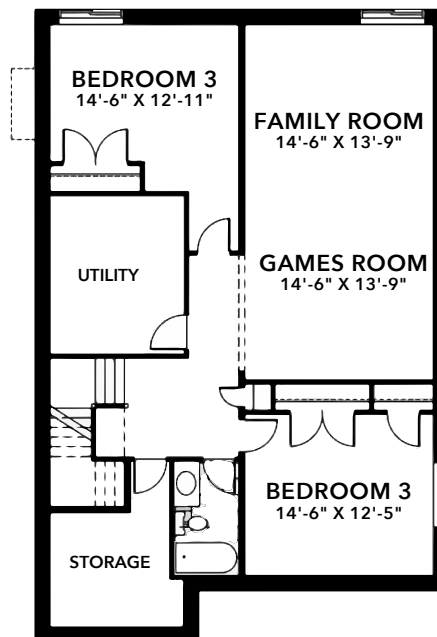
PEACE OF MIND

The Preston's popularity as a duplex translates effortlessly into a smart family bungalow; with all your living needs on one floor, there is less time spent trekking up and down the stairs.



MAIN FLOOR

1491 sqft



OPTIONAL BASEMENT
DEVELOPMENT

1073 sqft



30 YEARS OF EXPERIENCE

WWW.BUILDWITHKIMBERLEY.CA
Edmonton's SEVEN TIME Builder of the Year

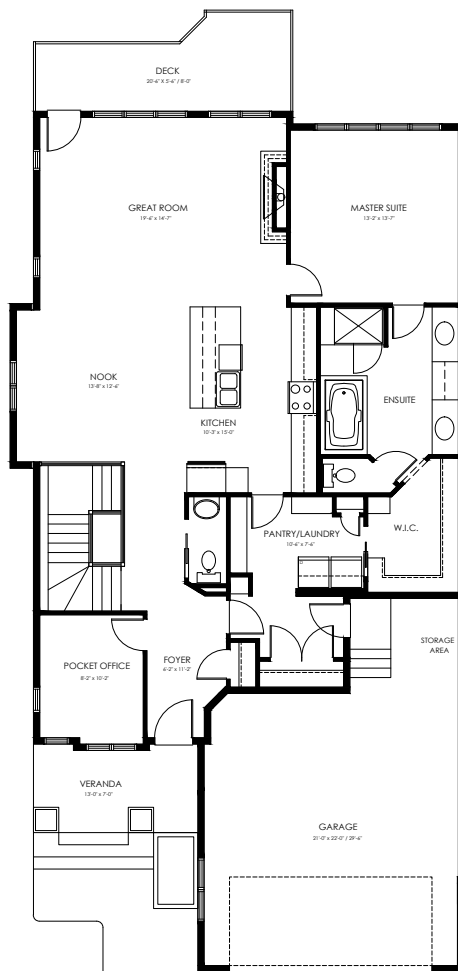
Need to make adjustments so it's just right? We can personalize this plan!

PRESTON 34

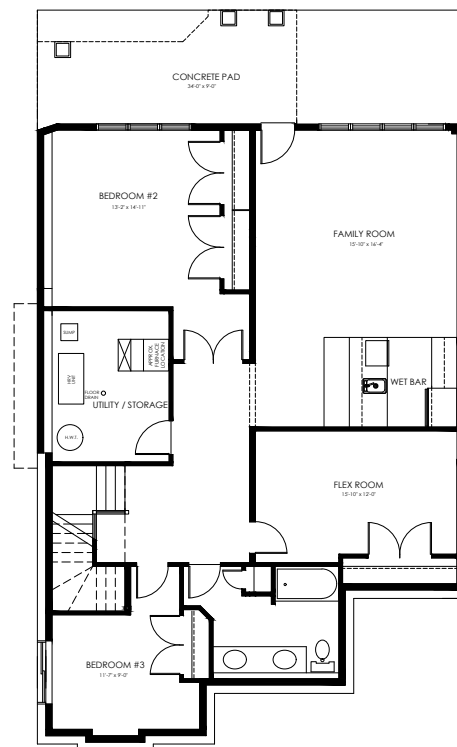
2834 SQFT – 3 BEDROOMS

DUPLEX – ESTATES OF SALISBURY VILLAGE

The Estates of Salisbury Village is a quiet cul-de-sac of estate bungalow duplexes in Sherwood Park. Our award-winning Preston floorplan includes a spacious Owner's Suite connecting to the Laundry Room through your Walk-in Closet to allow for functional main floor living. No need to sacrifice on space with a Pocket Office on the main floor and an additional Flex Room plus 2 Bedrooms in the finished Walk-out Basement.



MAIN FLOOR
1567 sqft



DEVELOPED BASEMENT
1267 sqft



WWW.BUILDWITHKIMBERLEY.CA
Edmonton's SEVEN TIME Builder of the Year

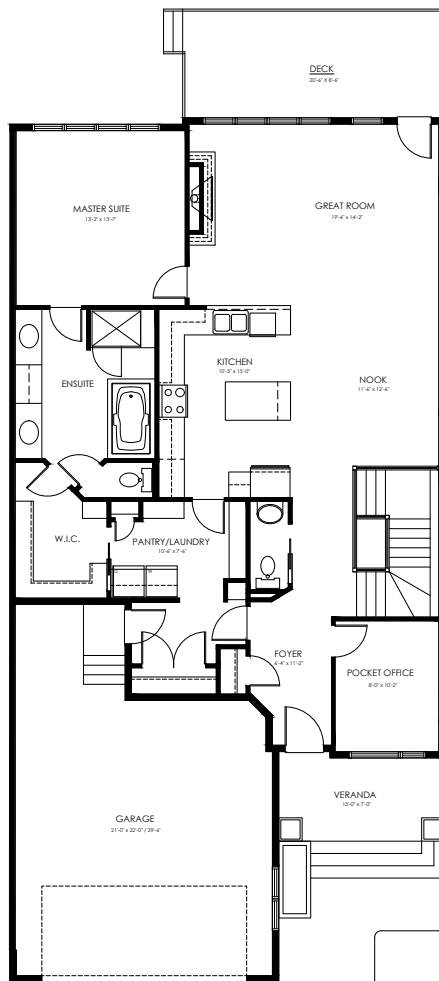
Questions? Call or text us!
780.809.5025

PRESTON 34

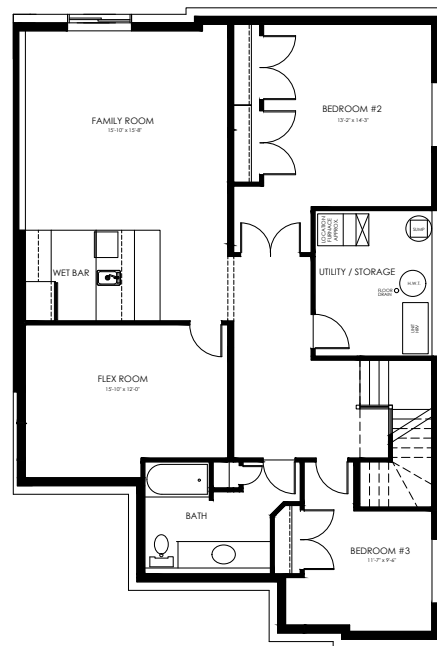
2793 SQFT – 3 BEDROOMS

DUPLEX – ESTATES OF SALISBURY VILLAGE

The Estates of Salisbury Village is a quiet cul-de-sac of estate bungalow duplexes in Sherwood Park. Our award-winning Preston floorplan includes a spacious Owner's Suite connecting to the Laundry Room through your Walk-in Closet to allow for functional main floor living. This home is move-in ready with landscaping front and back, appliances and finished Basement included.



MAIN FLOOR
1534 sqft



DEVELOPED BASEMENT
1259 sqft



30 YEARS OF EXCELLENCE

WWW.BUILDWITHKIMBERLEY.CA
Edmonton's SEVEN TIME Builder of the Year

Questions? Call or text us!
780.809.5025