

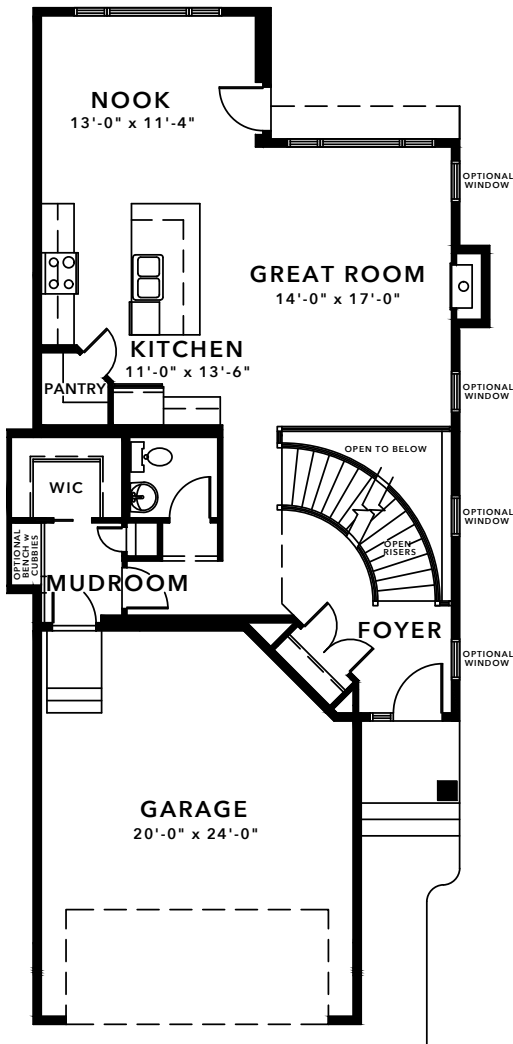


# ONYX 26

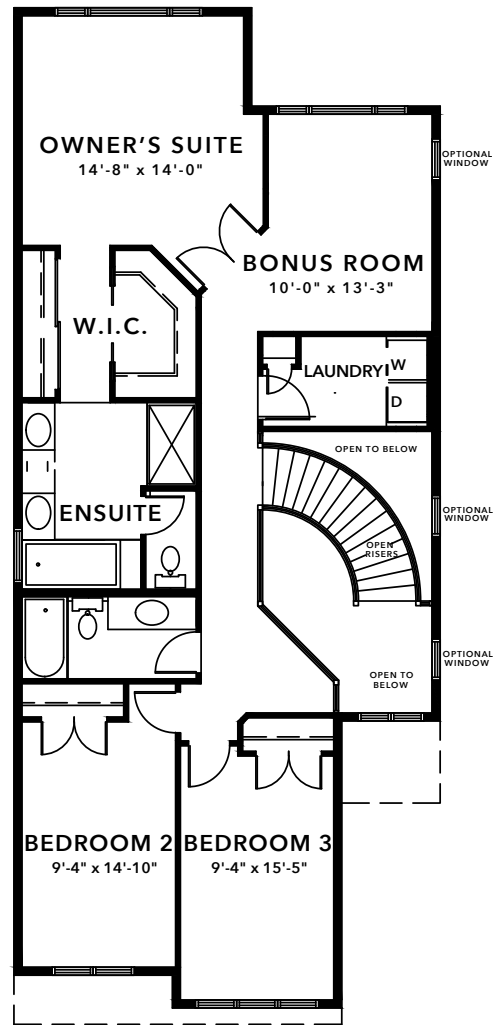
2124 SQFT – 3 BEDROOM

## ELEGANT FIRST IMPRESSIONS

The Onyx wows from your first steps through the front door with soaring 2-storey ceilings in the foyer and an optional curved staircase.



**MAIN FLOOR**  
889 sqft



**UPPER FLOOR**  
1235 sqft



[WWW.BUILDWITHKIMBERLEY.CA](http://WWW.BUILDWITHKIMBERLEY.CA)  
Edmonton's SEVEN TIME Builder of the Year

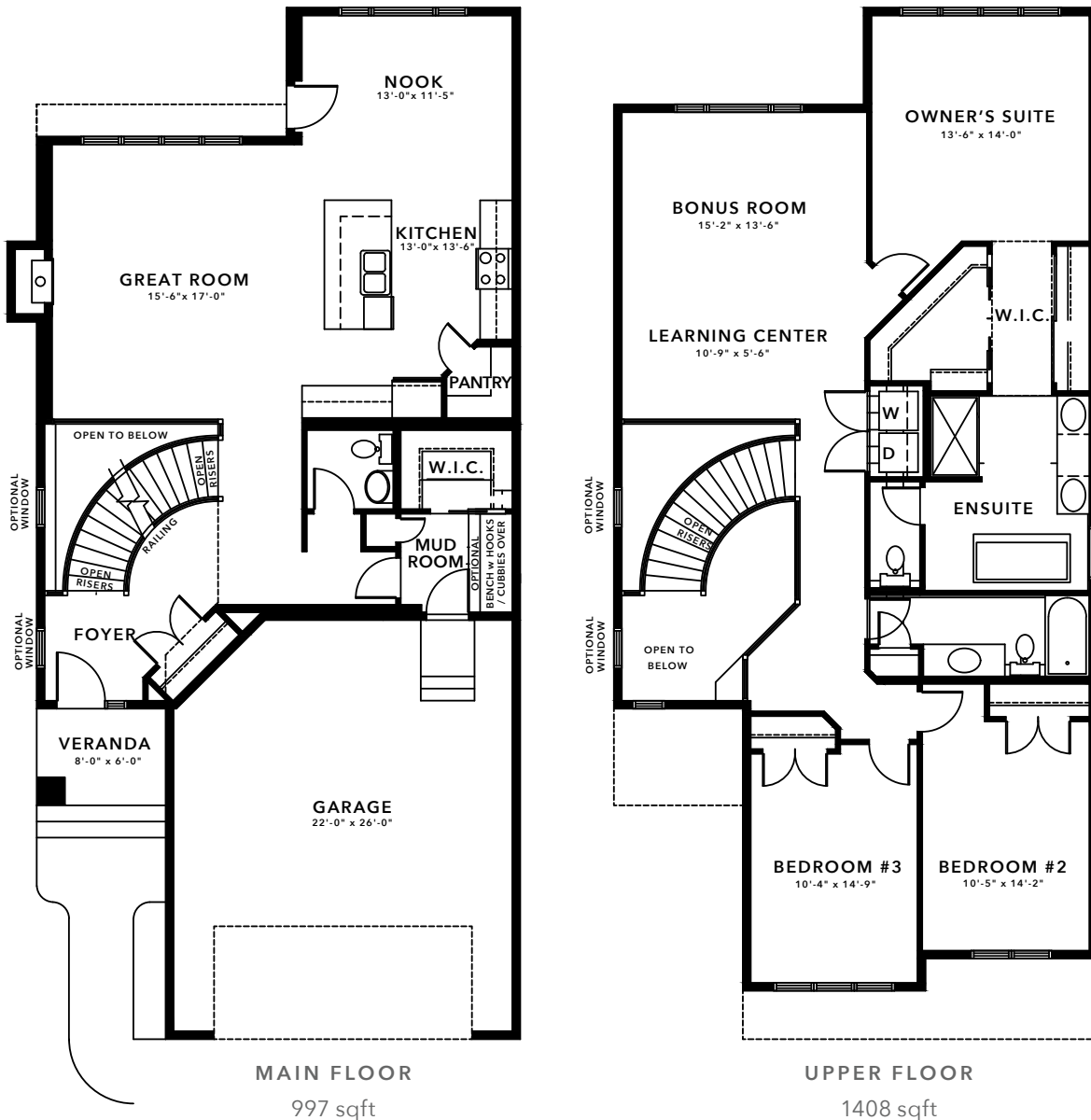
Need to make adjustments so it's just right? We can personalize this plan!

# ONYX 30

2405 SQFT – 3 BEDROOM

## ELEGANT FIRST IMPRESSIONS

The Onyx wows from your first steps through the front door with soaring 2-storey ceilings in the foyer and an optional curved staircase.



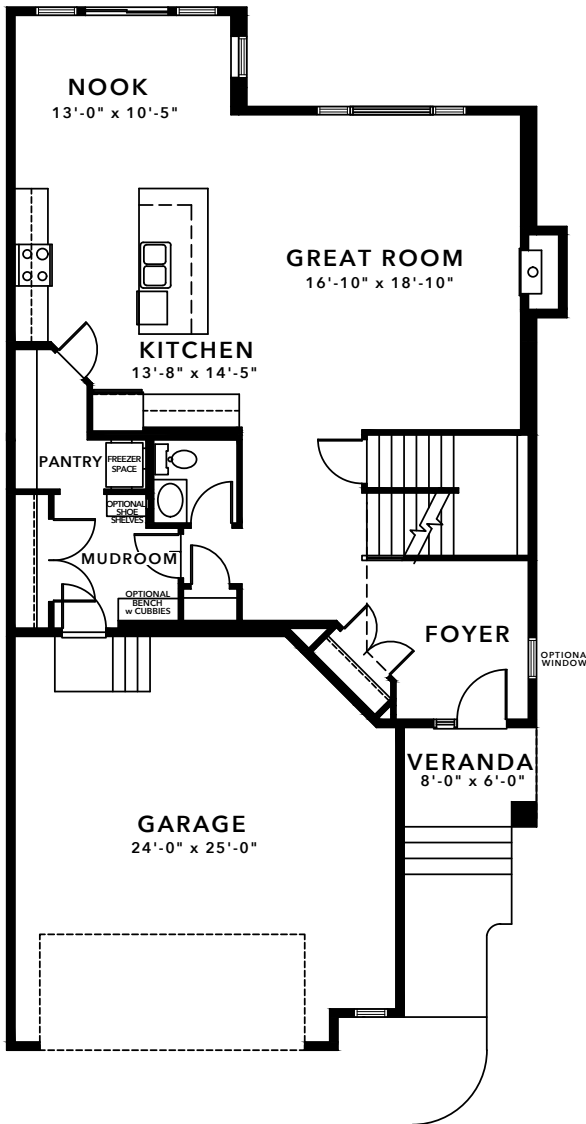


# ONYX 32

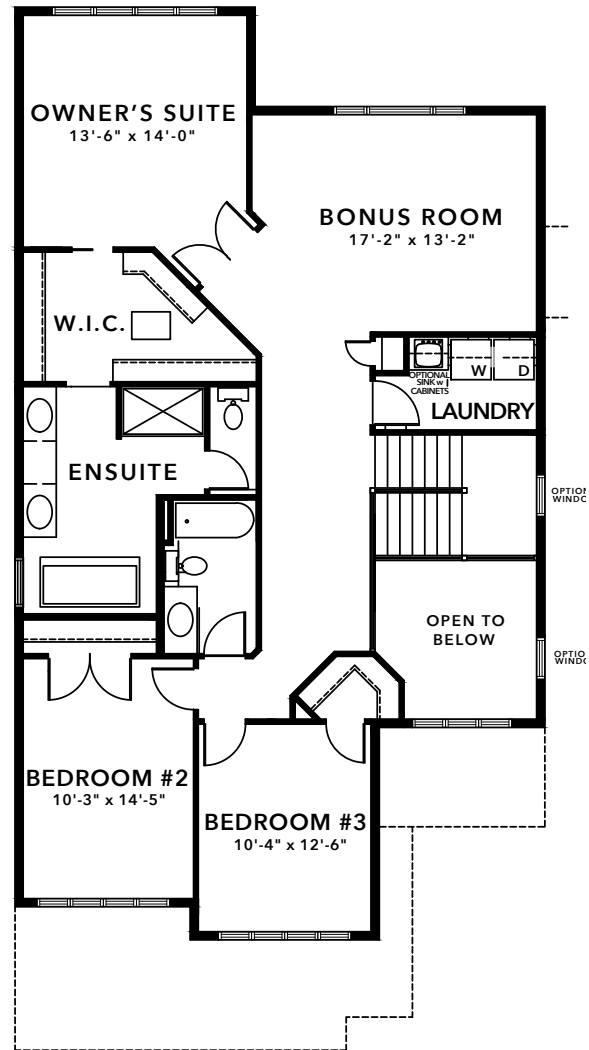
2565 SQFT - 3 BEDROOM

## ELEGANT FIRST IMPRESSIONS

The Onyx wows from your first steps through the front door with soaring 2-storey ceilings in the foyer.



MAIN FLOOR  
1179 sqft



UPPER FLOOR  
1386 sqft



30 YEARS OF EXCELLENCE

WWW.BUILDWITHKIMBERLEY.CA  
Edmonton's SEVEN TIME Builder of the Year

Need to make adjustments so it's just right? We can personalize this plan!